

User Manual

RTD200

USB Adapter for 2/3-Wire RTD Probe



Model name	Part number	Description
USB-RTD200	601046	USB adapter for 2/3-wire RTD probe
USB-RTD200-CAL	608046	USB adapter for 2/3-wire RTD probe – calibratable
VCP-RTD200	603046	USB adapter for 2/3-wire RTD probe – with VCP mode
VCP-RTD200-CAL	605046	USB adapter for 2/3-wire RTD probe – calibratable with VCP mode

HS code: 8471.60.10.50

Table of Contents

- 3** [Compliance Certification](#)
- 4** [Overview](#)
- 5** [Product Overview and Specifications](#)
- 6** [Safety Guidelines](#)
- 6** [Installation and Setup](#)
- 6** [Usage Guidelines and Applications](#)
- 9** [Care, Storage, and Recalibration](#)
- 9** [Troubleshooting Guide and Support](#)
- 10** [Return Process and Warranty Information](#)
- 10** [Accessories and Peripherals](#)
- 10** [Disassembly and Environmental Considerations](#)
- 11** [Document Revision History](#)

Compliance Certification

EU Declaration of Conformity

This declaration of conformity is issued under the sole responsibility of the manufacturer:

Dracal Technologies Inc.

A204 - 7900 Taschereau Blvd
Brossard (Quebec)
J4X 1C2 Canada

for the following product(s):

Model: RTD200

Type of Equipment: USB sensor

CE Marking: Yes

Compliance with Directives

RoHS3 Directive (2011/65/EU, 2015/863)

The USB Sensor Model RTD200 complies with the requirements of the RoHS Directive, restricting the use of hazardous substances in electrical and electronic equipment.

EMC Directive (2014/30/EU)

The USB Sensor Model RTD200 complies with the essential requirements of the EMC Directive for electromagnetic compatibility.

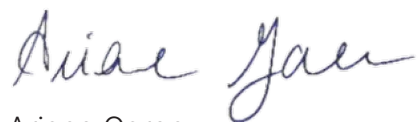
Technical Documentation

Dracal Technologies holds the technical documentation required by the relevant directives at the following address: compliance@dracal.com.

It is available upon request to the relevant authorities.

Signed for and on behalf of:

Dracal Technologies Inc., January 2024



Ariane Garon

President

Dracal Technologies Inc.



Overview

At Dracal Technologies, we want to democratize access to precision data to engineers and scientists to ease their lives so they achieve their goals more quickly. We believe that precision data should not be compromised by ease of use.

Dracal's measuring instruments connect through a USB port. Units with the VCP option allow users to integrate sensor data without using a 3rd party software. The USB units are compatible with DracalView, the graphical software, and command-line interfaces.

The calibratable units are equipped with a 3-point user-calibration mechanism that allows the handler to align multiple instruments together precisely or to adjust the accuracy of an instrument with a more precise reference.

The RTD series are USB adapters for Pt100 RTD probes, Class AA (1/3 DIN) or less. Connect any suitable probe to the adapter to measure temperature with outstanding precision. The RTD200 comes with a polarized 3-pin connector that facilitates connection and disconnection of the probe. The RTD200: the simplest way to collect temperature data with an RTD probe.

Product Overview and Specifications

Product Overview

The RTD200 is a versatile USB adapter designed to measure temperatures using 2- or 3-wire 100-ohm Pt100 RTD sensors. With its 18-bit data converter, the RTD200 provides precise temperature measurements with high resolution. It compensates for errors introduced by the length of the probe cable when connected with three wires, allowing for accurate readings even with cables up to 30 meters long.

The adapter reduces electronic noise with built-in digital filters, ensuring precise and reliable measurements. Sensors connect easily using a standard 3-pin mini RTD connector. The compact USB key form factor simplifies integration into space-constrained applications.

Key specifications

Temperature	
Adapter operating range	-200 °C to 800 °C
Typical accuracy (excluding probe)	±0.06 °C
Resolution	0.02 °C

Miscellaneous

- Pre-wired Pt100 probe available: RTD-PT100-SIL-A.
- Supply: Powered by a USB port or a powered USB HUB.
- Operating temperature range: -20 °C to 70 °C.
- Supported by the SensGate DAQ unit.
- Simultaneous operation of multiple Dracal sensors is supported.*

* Only limited by allowable USB topologies and OS capacity.
Fifty simultaneous USB sensors have been tested under Windows 8.

Safety Guidelines

WARNING: Electromagnetic interference (EMI) may decrease the sensor's accuracy. Avoid using this device near EMI sources such as motors, high-voltage transformers, and fluorescent tubes.

WARNING: This product should not be used in applications where its failure may cause personal injury.

Installation and Setup

TIP: As for any precision measurement equipment, powering the unit at least 15 minutes before using it is advised.

Installation

- 1 Download the DracalView* software at <https://www.dracal.com/en/software/>
- 2 Follow the installer's instructions. The whole process should take less than a minute. The setup is now completed.
- 3 Insert the unit into a free USB port.

* Includes a set of command-line tools.

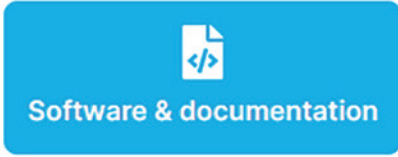
Usage Guidelines and Applications

Operation – DracalView

We recommend launching DracalView to check if the instrument is connected correctly and works as expected. Here are the main steps of the Getting Started with DracalView guide.

- 1 Connect an instrument.
- 2 Launch DracalView.
- 3 Verify the instrument appears in the Sources tab.
- 4 Modify units and decimals in the Configuration tab (Optional).
- 5 Customize the names of channels to record in the Sources tab (Optional).
- 6 Visualize data on GraphView.

Please refer to the [RTD200](#) page for the complete guide, specifically the “Software & Documentation” tab.



Of note, to log data with DracalView, these are the remaining main steps of the Getting Started guide:

- ⑦ Initiate the logging task in the Logging tab.
- ⑧ Keep an eye on data with BigView.

Watch [an introductory video](#) for a quick overview of setting up and logging data in less than 3 minutes.



Operation – Command-line interface

The command-line tools are available with the download of DracalView. In the [Getting Started](#) guide, locate them and call the -h (help) argument, whether on a Windows, MacOS X, or Linux-based computer.

For complete documentation on how to use dracal-usb-get or dracal-sens-gate-get, code examples, and integrating sensor data into LabVIEW™, click on the relevant link in the same Getting Started guide.

Briefly, to log data to a file, here is the command line:

```
dracal-usb-get -s [serial number]
-i [chosen channels] -L [location]
```

To redirect the output, give the argument -L the parameter “- ” to have a stdout output.

Operation – COM Protocol

“VCP-” *prefix*: If present, the product is equipped with the virtual COM port (VCP) option, which allows it to be freely converted between USB and VCP modes. **It is delivered in USB mode.**

To convert the product from USB to VCP mode,

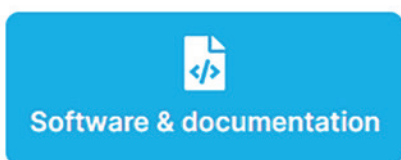
- 1 Open a command-line terminal.
- 2 Call “dracal-usb-set -f set_protocol VCP” and disconnect the product.

To reverse the product back to USB mode,

Send the “PROTOCOL USB” command and disconnect the product.

Please note that under Windows, once an instrument is converted to VCP, it is not recognizable by DracalView and the command-line tools.

For additional information, please click the relevant link in the Software & Documentation section of the [RTD200](#) page.



Calibration

“-CAL” *suffix*: If present, the product is equipped with a 3-point user-calibration mechanism.

The [Getting Started](#) guide for calibration is summarized as follows:

- 1 Determine the calibration points.
- 2 Perform the calibration using DracalView or dracal-usb-cal.

A comprehensive video tutorial on the best practices for calibrating instruments using DracalView can be found [here](#).



The Getting Started guide for successful calibration, mentioned in this section, provides many tips and complementary documentation.

Care, Storage, and Recalibration

Care

Use within the specifications available in the [RTD200](#) datasheet.

NOTE: Note that this product is not waterproof and requires protection if contact with water is possible.

Storage

Store within the housing temperature and humidity ranges specified in the [RTD200](#) datasheet.

Recalibration

Dracal's measuring instruments are factory-calibrated. It is possible to purchase a calibration certificate traceable to the SI along with the instrument and receive a calibrated instrument. An ISO17025-accredited laboratory performs this calibration.

If the instrument has a "-CAL" suffix, it can be adjusted for accuracy during the calibration.

The long-term drift of the RTD200 is minimal. Therefore, depending on the user's application, an adjustment might be required more frequently.

Troubleshooting Guide and Support

Troubleshooting

TIP: Avoid installing the sensor in a location where strong vibration is likely to occur. Strong vibrations may cause slight inaccuracies in the reading.

Feel free to browse the website's Resources section for any supplementary information. Here are interesting articles:

- [Most frequent questions about Dracal](#)
- [Top challenges and their solutions](#)
- [FAQs about calibration](#)

Support

Dracal Technologies has a dedicated email address for support: support@dracal.com.

As customer satisfaction is a priority, someone (an actual human!) will respond within 24 hours.

Return Process and Warranty Information

Return Process

If a customer experiences issues with a Dracal sensor, they can contact support@dracal.com and explain their problem. In most cases, there will be an easy solution.

In the rare event of a faulty instrument under warranty, Dracal Technologies will proceed to a replacement upon evaluating the situation. The procedure will be explained through email once the customer advises support@dracal.com.

Warranty

The complete warranty can be found on Dracal Technologies' website [here](#). Briefly, Dracal Technologies only warrants to the original product purchaser for 24 months (2 years) from the delivery date.

Accessories and Peripherals

To use Dracal Technologies' complete DAQ solution, the user must download the software on a computer with a USB port.

Aside from sensors, Dracal Technologies offers a remote data logging station: the [SensGate](#). Both a Wi-Fi/Ethernet gateway for Dracal's sensors and a data logger, it fulfills the needs of customers requiring a remote solution to precision data acquisition.

Disassembly and Environmental Considerations

Disassembly Instructions

- ① Turn Off Power: Before disassembling the USB sensor, ensure it is disconnected from any USB port.
- ② Remove External Connections: Unplug any cables connected to the USB sensor.
- ③ Identify Screws and Fasteners: Locate and identify any screws or fasteners securing the casing of the USB sensor.

- ④ **Separate Casing:** Gently separate the casing; be careful about damaging internal components. If resistance is encountered, recheck for any overlooked screws.
- ⑤ **Document Component Positions:** Before further disassembly, document the positions of internal components for ease of reassembly.
- ⑥ **Handle Components with Care:** Handle internal components carefully to avoid electrostatic discharge and damage. Use an ESD (Electrostatic Discharge) mat or wrist strap if available.
- ⑦ **Follow Reverse Order for Reassembly:** When reassembling the USB sensor, follow the disassembly steps in reverse order, ensuring components are correctly positioned and secured.

Environmental Considerations

- ① **Recycling Recommendations:** Dispose of components and packaging materials in accordance with local recycling regulations. Check with local authorities for proper e-waste disposal facilities.
- ② **Reuse Opportunities:** Consider reusing components or donating functional parts to minimize environmental impact.
- ③ **Minimize Energy Consumption:** Power down or disconnect the USB sensor when not in use to minimize energy consumption.

RoHS Compliance

Our USB sensors adhere to RoHS (Restriction of Hazardous Substances) directives, ensuring they are free from harmful substances such as lead, mercury, and cadmium.

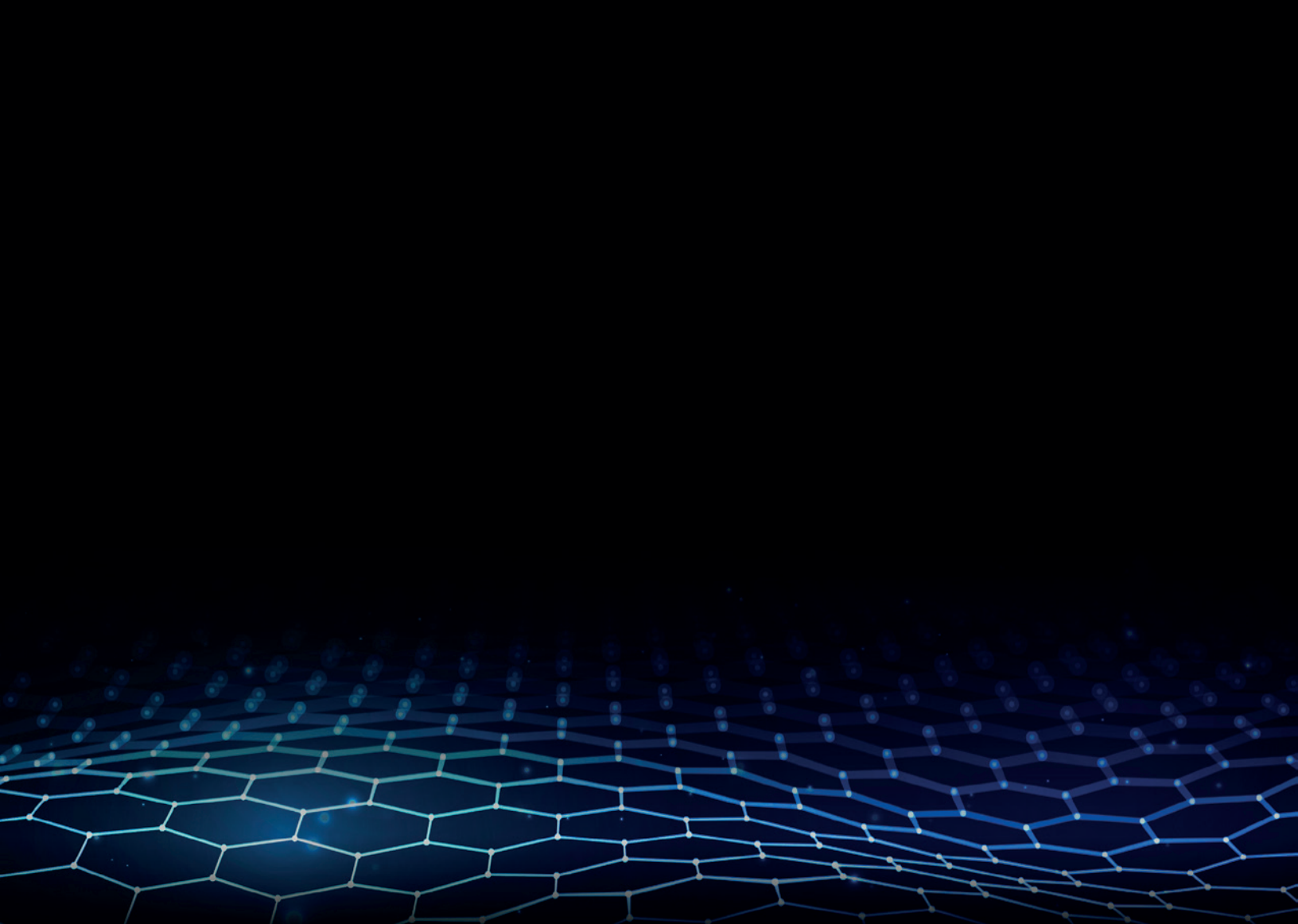
CE and REACH Compliance

These USB sensors comply with CE (Conformité Européenne) and REACH (Registration, Evaluation, Authorization, and Restriction of Chemicals) regulations, meeting European safety and environmental impact standards.

Document Revision History

Version 1.0
2024-02-08

Creation of the User Manual.



✉ info@dracal.com

🌐 dracal.com

☎ +1 450.812.8612

📍 **Dracal Technologies Inc.**
A204 - 7900 Taschereau Blvd
Brossard (Quebec)
J4X 1C2 Canada